

FINAL PLAT

NORTHBRIDGE HEIGHTS SUBDIVISION

EIGHTEENTH ADDITION, AN OFFICIAL REPLAT



OWNED BY AND REQUESTED BY:

UTHE DEVELOPMENT COMPANY, L.L.C.
105 S. 16TH STREET
AMES, IA 50010

LEGAL DESCRIPTION

A TRACT OF LAND, BEING AN OFFICIAL REPLAT OF OUTLOT "SS" OF NORTHBRIDGE HEIGHTS SUBDIVISION, SEVENTEENTH ADDITION IN AMES, STORY COUNTY, IOWA.

NOTES:

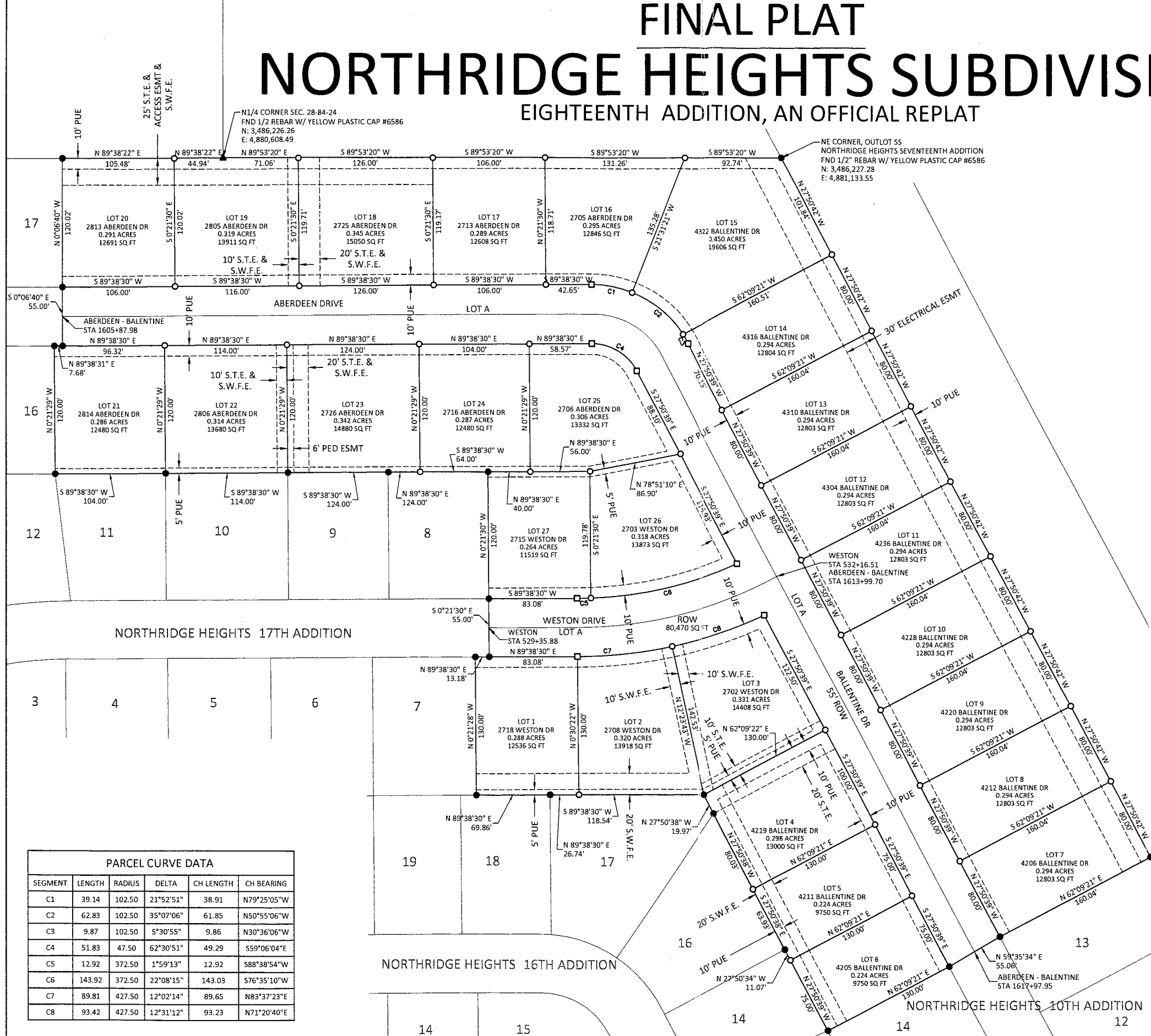
- NORTHBRIDGE HEIGHTS SUBDIVISION, EIGHTEENTH ADDITION, IS IN THE NORTH HALF OF SECTION 28-84-24.
- THE NORTH LINE OF THE NE 1/4 OF SEC. 28-84-24 BEARS N 89°53'20" E AS SHOWN ON THE FINAL PLAT FOR NORTHBRIDGE HEIGHTS SUBDIVISION, SIXTEENTH ADDITION.
- TOTAL AREA OF THE EIGHTEENTH ADDITION IS 9.988 ACRES, OR 430,071 SQUARE FEET.
- SOIL BORINGS ARE REQUIRED IN AREAS WITHIN THIS PLAT WHICH HAVE BEEN IDENTIFIED BY THE CITY OF AMES AS HAVING SOILS THAT MAKE CONSTRUCTION OF BUILDINGS DIFFICULT.
- COORDINATES SHOWN ARE ON IOWA STATE PLANE COORDINATE SYSTEM, IOWA NORTH ZONE, NAD 83.
- THIS SURVEY MEETS OR EXCEEDS IOWA CODE 355.8 (15)
- LOT A, CONTAINING 80,470 SQUARE FEET IS TO BE DEDICATED TO THE CITY OF AMES FOR STREET PURPOSES.
- EASEMENTS AS SHOWN.

LEGEND

- FOUND 1/2" REBAR WITH PLASTIC YELLOW CAP #17535, UNLESS OTHERWISE NOTED.
- ▲ FOUND SECTION CORNER
- SET 1/2"x24" REBAR WITH YELLOW PLASTIC CAP #17535
- SET 5/8"x24" REBAR WITH YELLOW PLASTIC CAP #17535
- (R) RECORDED DIMENSION
- PUE PUBLIC UTILITY EASEMENT
- S.T.E. STORM SEWER EASEMENT
- S.W.F.E. SURFACE WATER FLOWAGE EASEMENT

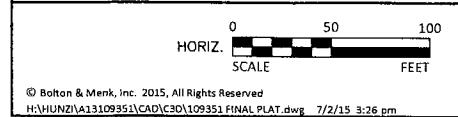
Instrument: 2015-00010314
Date: Oct 21, 2015 03:06:13P
Rec Fee: .00 E-Com Fee: .00
Aud Fee: .00 Trans Tax: .00
Rec Management Fee: .00
Non-Standard Page Fee:
Filed for record in Story County, Iowa
Stacie L. Herridge, County Recorder

SLIDE 5a1 PAGE 5



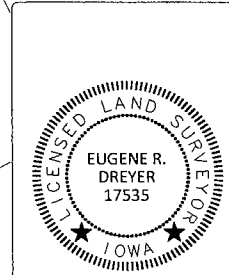
PARCEL CURVE DATA					
SEGMENT	LENGTH	RADIUS	DELTA	CH LENGTH	CH BEARING
C1	39.14	102.50	21°52'51"	38.91	N79°25'05"W
C2	62.83	102.50	35°07'06"	61.85	N50°55'06"W
C3	9.87	102.50	5°30'55"	9.86	N30°36'06"W
C4	51.83	47.50	62°30'51"	49.29	S59°06'04"E
C5	12.92	372.50	1°59'13"	12.92	S88°38'54"W
C6	143.92	372.50	22°08'15"	143.03	S76°35'10"W
C7	89.81	427.50	12°02'14"	89.65	N83°37'23"E
C8	93.42	427.50	12°31'12"	93.23	N71°20'40"E

Filed By / Return To: ATS of Story County
212 SE 16th Street, Ames, IA 50010
File No. 15-2188



BOLTON & MENK, INC.
Consulting Engineers & Surveyors
MANKATO, MN FAIRMONT, MN SLEEPY EYE, MN BURNSVILLE, MN
WILLMAR, MN CHASKA, MN RAMSEY, MN MAPLEWOOD, MN
BAXTER, MN ROCHESTER, MN AMES, IA SPENCER, IA

REV.	BY	DATE	HUNZIKER DEVELOPMENT	SHEET
			NORTHBRIDGE HEIGHTS 18TH	1
			FINAL PLAT	



I hereby certify that this land surveying document was prepared by me and the related field work was performed by me or under my direct personal supervision and that I am a duly licensed Land Surveyor under the laws of the State of Iowa

EUGENE R. DREYER L.S.
REG. NO. 17535 DATE: 7/2/2015

MY LICENSE RENEWAL DATE IS DECEMBER 31, 2016
PAGES OR SHEETS COVERED BY THIS SEAL:
SHEET 1 OF 1

© Bolton & Menk, Inc. 2015, All Rights Reserved
H:\HUNZI\41310935\ICAD\C301\09351.FINAL.PLAT.dwg 7/2/15 3:26 pm