

BLK	LOT	AC	BLK	LOT	AC	BLK	LOT	AC
C1	1	1.00	C1	1	1.00	C1	1	1.00
C1	2	1.00	C1	2	1.00	C1	2	1.00
C1	3	1.00	C1	3	1.00	C1	3	1.00
C1	4	1.00	C1	4	1.00	C1	4	1.00
C1	5	1.00	C1	5	1.00	C1	5	1.00
C1	6	1.00	C1	6	1.00	C1	6	1.00
C1	7	1.00	C1	7	1.00	C1	7	1.00
C1	8	1.00	C1	8	1.00	C1	8	1.00
C1	9	1.00	C1	9	1.00	C1	9	1.00
C1	10	1.00	C1	10	1.00	C1	10	1.00
C1	11	1.00	C1	11	1.00	C1	11	1.00
C1	12	1.00	C1	12	1.00	C1	12	1.00
C1	13	1.00	C1	13	1.00	C1	13	1.00
C1	14	1.00	C1	14	1.00	C1	14	1.00
C1	15	1.00	C1	15	1.00	C1	15	1.00
C1	16	1.00	C1	16	1.00	C1	16	1.00
C1	17	1.00	C1	17	1.00	C1	17	1.00
C1	18	1.00	C1	18	1.00	C1	18	1.00
C1	19	1.00	C1	19	1.00	C1	19	1.00
C1	20	1.00	C1	20	1.00	C1	20	1.00
C1	21	1.00	C1	21	1.00	C1	21	1.00
C1	22	1.00	C1	22	1.00	C1	22	1.00
C1	23	1.00	C1	23	1.00	C1	23	1.00
C1	24	1.00	C1	24	1.00	C1	24	1.00
C1	25	1.00	C1	25	1.00	C1	25	1.00
C1	26	1.00	C1	26	1.00	C1	26	1.00
C1	27	1.00	C1	27	1.00	C1	27	1.00
C1	28	1.00	C1	28	1.00	C1	28	1.00
C1	29	1.00	C1	29	1.00	C1	29	1.00
C1	30	1.00	C1	30	1.00	C1	30	1.00

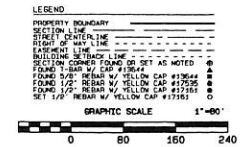
**NOTES:**

- BLK 1 CONTAINS THE FOLLOWING BLANKET EASEMENTS:
  - PUBLIC UTILITY EASEMENT
  - STORM SEWER EASEMENT
  - SURFACE WATER FLOWAGE EASEMENT
  - COMBINED USE EASEMENT
  - STORM WATER DETENTION EASEMENT
  - STORM WATER CONVEYANCE EASEMENT
- SOIL BONDAGE IS REQUIRED IN AREAS WITHIN THIS PLAT WHICH HAVE BEEN IDENTIFIED BY THE CITY OF AMES AS HAVING SOILS THAT MAKE THE CONSTRUCTION OF BUILDINGS DIFFICULT.
- LOTS A, B & C WILL BE DESIGNATED TO THE CITY OF AMES FOR PUBLIC RIGHT OF WAY.
- VEHICLE PARKING SHALL BE REQUIREMENTS FOR LOTS:
  - 2' ALONG THE NORTH SIDE OF ALLETON DRIVE
  - 6' ALONG THE EAST SIDE OF WESTFIELD DRIVE

**DRAWN/DEVELOPER:**  
 HANDEY LAND DEVELOPMENT CO., LLC  
 100 S. 16TH ST SUITE A  
 AMES IA 50010

**ZONING DISTRICT - PR-RL (SUBURBAN RESIDENTIAL PZ LOW DENSITY)**

**SURVEY DESCRIPTION - SUNSET RIDGE SUBDIVISION SIXTH ADDITION**  
 A subdivision of Outlots 66 and 67 in Sunset Ridge Subdivision, Fifth Addition to the City of Ames, Story County, Iowa, consisting of 41.0 acres, which includes 1.01 acres of existing public right-of-way.



**STUMBO & ASSOCIATES**  
**LAND SURVEYING**  
 510 S. 17TH STREET, SUITE 102, AMES, IOWA 50010  
 PHONE 515-259-3664 FAX 515-259-4403

**FINAL PLAT**  
**SUNSET RIDGE SUBDIVISION**  
**SIXTH ADDITION**  
 A SUBD. OF OUTLOTS 66 & 67 IN SUNSET RIDGE SUBDIVISION, 5TH ADDN. AMES, STORY COUNTY, IOWA.  
 JOB #16494FPG DATE: 4/14/15 PAGE: 1 OF 1

**Rael Stettin**  
 DATE: 4/14/15  
 I hereby certify that this plat was prepared by me or under my direct supervision and that I am a duly licensed and registered professional land surveyor in the State of Iowa.  
 BY: *Rael Stettin* DATE: 4/14/15  
 I hereby consent that this plat be recorded on 4/14/15.

Instrument: 2015-00004006  
 Date: May 12, 2015 02:49:33P  
 Rec Fee: 70.00 E-Com Fee: 1.00  
 Ad Fee: 5.00 Trans Tax: 1.00  
 Non-Standard Page Fee: .00  
 Filed for record in Story County, Iowa  
 Stacie L. Henrider, County Recorder

Filed By / Return To: ATS of Story County  
 212 SE 16th Street, Ames, IA 50010  
 File No. **COUNTY**